



World-Class  
Aluminium Composite Panel

**Alcotuff**

simply the best





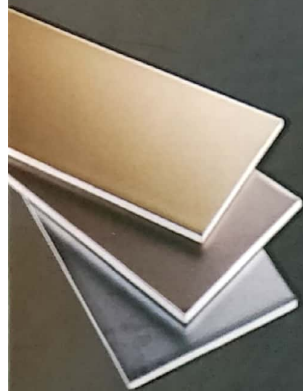
# Premium ACP for Premium Buildings



Botanica Residence @ Simprug

01

## Aluminium Composite Panel



This remarkable product offers a wide range of architectural solutions for you to create a new image for your corporate office, residential and public buildings, gas stations, hotels, showrooms, banks, and many more.

Alcotuff is composed of a Fire Retardant core sandwiched between two architectural aluminium sheets, with its front side coated with X-TRA Durable PVDF (Polyvinylidene fluoride) or FEVE (Fluoroethylene Vinyl Ether) and its back side with Polyester service coating.

Using adhesives with co-extrusion process, one of the very few in the world due to high tech/capital machinery costs, Alcotuff has superior panel adhesion over the more common adhesive film laminating process.

With its simple and quick installation including wide selection of colors and sizes, it can also quickly turn old, tired buildings into a brand new exciting look!



02

## PVDF Coating Finish Specification

Testing	Method	Result
Finish Coat Thickness	ASTM B487	$\geq 25\mu\text{m}$
Gloss (initial, 60°)	ASTM D523	20 - 70% <sup>a</sup>
Pencil Hardness	ASTM D3363	HB - 2H <sup>b</sup>
Flexibility	ASTM D4145	2T
Adhesive Force	ASTM D3359	5B
Impact Resistance	ASTM D2794	$\geq 100\text{kg.cm}$
Abrasion Resistance	ASTM D968	40 - 70 L/mile <sup>c</sup>
Mortar Resistance	AAMA2605	no change
Humidity Resistance	ASTM D2246	no change
Boiling Water Resistance	ASTM D2247	no change
Salt Spray Resistance	ASTM B117	no blister
Acid Resistance	ASTM D1308	no effect
Alkali Resistance	ASTM D1308	no effect
Solvent Resistance	ASTM D1308	no effect
Color Retention	ASTM D2244	$\leq 5$ units
Chalk Resistance	ASTM D4214	no chalking
Gloss Retention	ASTM D2244	80 - 90%

<sup>a</sup> Varies per color<sup>b,c</sup> Differs on selected coating type  
4000 hours exposure

03

## Product Specification

Panel Thickness (mm)	Aluminium Thickness (mm)	Alloy Series	Coating	Dimension (mm)
4	0.5	5005	3-layer 35 $\mu\text{m}$ PVDF	1220 x 4880
4	0.3	3003	2-layer 25 $\mu\text{m}$ PVDF	1220 x 4880

\*custom sizes are available upon request.



\* Written Warranty certificates will be issued for every necessary project based on the specifications of panels and color coatings used plus the environmental conditions. Certain colors due to raw material composition would have longer or shorter warranted life span.



## Fire Retardant

Alcotuff is manufactured using fire-retarding composite material of the highest degree developed with proprietary technology. It conforms to the fire safety requirements according to SNI 1741-2008 Indonesian standard, DIN 4102 German standard, BS 476 British standard & ASTM E119 American standard.

## Color Durability

Using the best coating material of PVDF or FEVE with specified resin level controlled & multiple dip roller coating & baking process, Alcotuff ensures color uniformity & has the ability to retard color fading for a long period in outdoor condition.

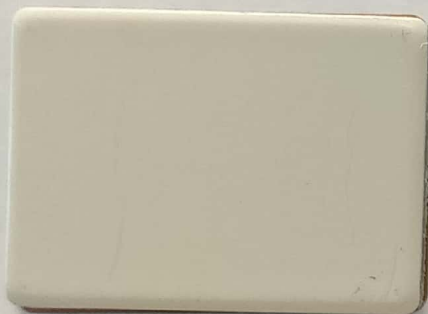
## Easy Cleaning

With special request, we can produce Alcotuff with easy-cleaning characteristics by applying special lacquering coating which leads to easy-to-clean characteristics on the surface. There exists some nano names easy-cleaning products which do not actually last more than a year. Alcotuff's Easy-Cleaning type is durable & lasts longer.

# Color Selection

Color availability is based on the thickness of the aluminium skin, which comes in 0.5mm & 0.3mm

## 0.5 series



MW05 | Milk White



SW05 | Signal White



PW05 | Pure White



PW07 | Pearl White



LY05 | Light Grey



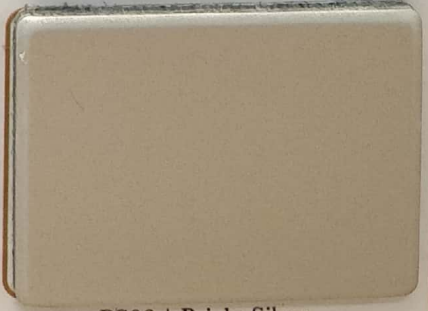
WS06 | White Silver Grey



DS05 | Dark Silver



WG05 | Window Grey

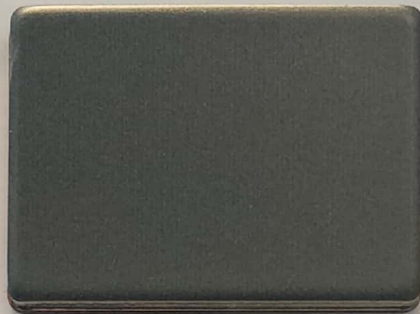


BS06 | Bright Silver

0.5 series



DG05 | Dark Grey



PG05 | Pearl Grey



AG05 | Anthracite Grey



BC05 | Black



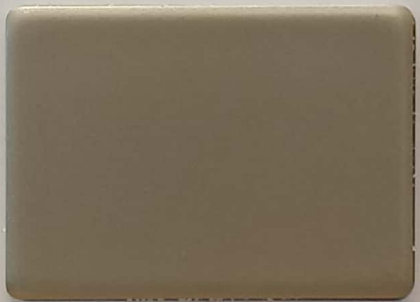
BP05 | Black Pearl



BC06 | Black Glossy



CG05 | China Grey



IR06 | Iron Grey



SY05 | Saffron Yellow



RA05 | Red Auto



CB05 | Coffee Brown



SB05 | Satin Brown



CP06 | Copper



GD05 | Golden



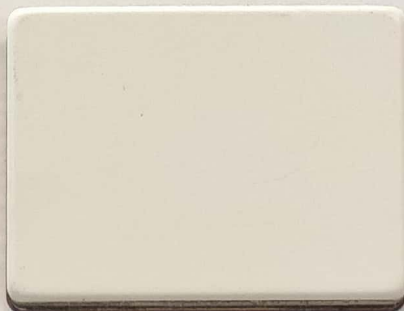
DC05 | Dark Champagne



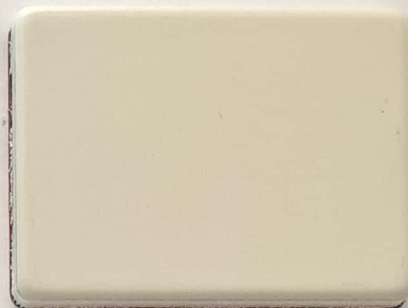
0.3 series



PW06 | Pure White Glossy



PW05 | Pure White



IW06 | Ivory White



MW05 | Milk White



WS06 | White Silver Grey



BS06 | Bright Silver



DC05 | Dark Champagne



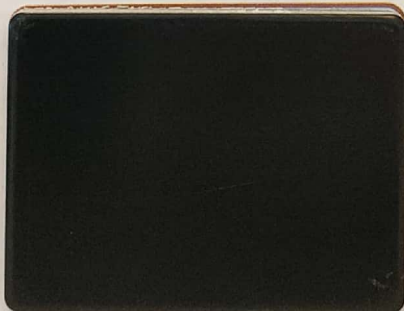
GD05 | Golden



DG05 | Dark Grey



NG05 | Night Grey



BC05 | Black



BP05 | Black Pearl



BC06 | Black Glossy



PL05 | Purple



DB05 | Dark Blue

PT. GIEO PRIMA INDO

0.3 series



BG05 | Blue Glossy



BB05 | Blue



TC05 | Tosca



GR05 | Green



JS05 | Jade Silver



LG06 | Light Green Glossy



BB06 | Blue Shine



YL05 | Yellow



MB05 | Metallic Brass



OR05 | Orange Red



RD05 | Red



RG05 | Red Glossy



BD05 | Burgundy



WD24 | Wood



WD93 | Wood



THE RITZ-CARLTON

Pacific Place  
Jakarta

South Quarter  
@ TB Simatupang

 **PT Impack Pratama Industri Tbk**  
*Excellence through Passion*

#### Corporate Headquarter

Altira Office Tower 38th Floor  
Altira Business Park  
Jl. Yos Sudarso Kav. 85  
Jakarta 14350 - Indonesia  
Tel : +6221-2188 2000  
Fax : +6221-2188 2001

#### Plant 1

Kawasan Hyundai Lippo Cikarang  
Jl. Inti Raya Blok C4 No. 2-3  
Bekasi 17550 - Indonesia

#### Plant 2

Kawasan Delta Silicon 2 Lippo Cikarang  
Jl. Trembesi Blok F17-1  
Bekasi 17550 - Indonesia

[www.impact-pratama.com](http://www.impact-pratama.com)

Distributed by :

**PT. ALDERON PRATAMA INDONESIA**